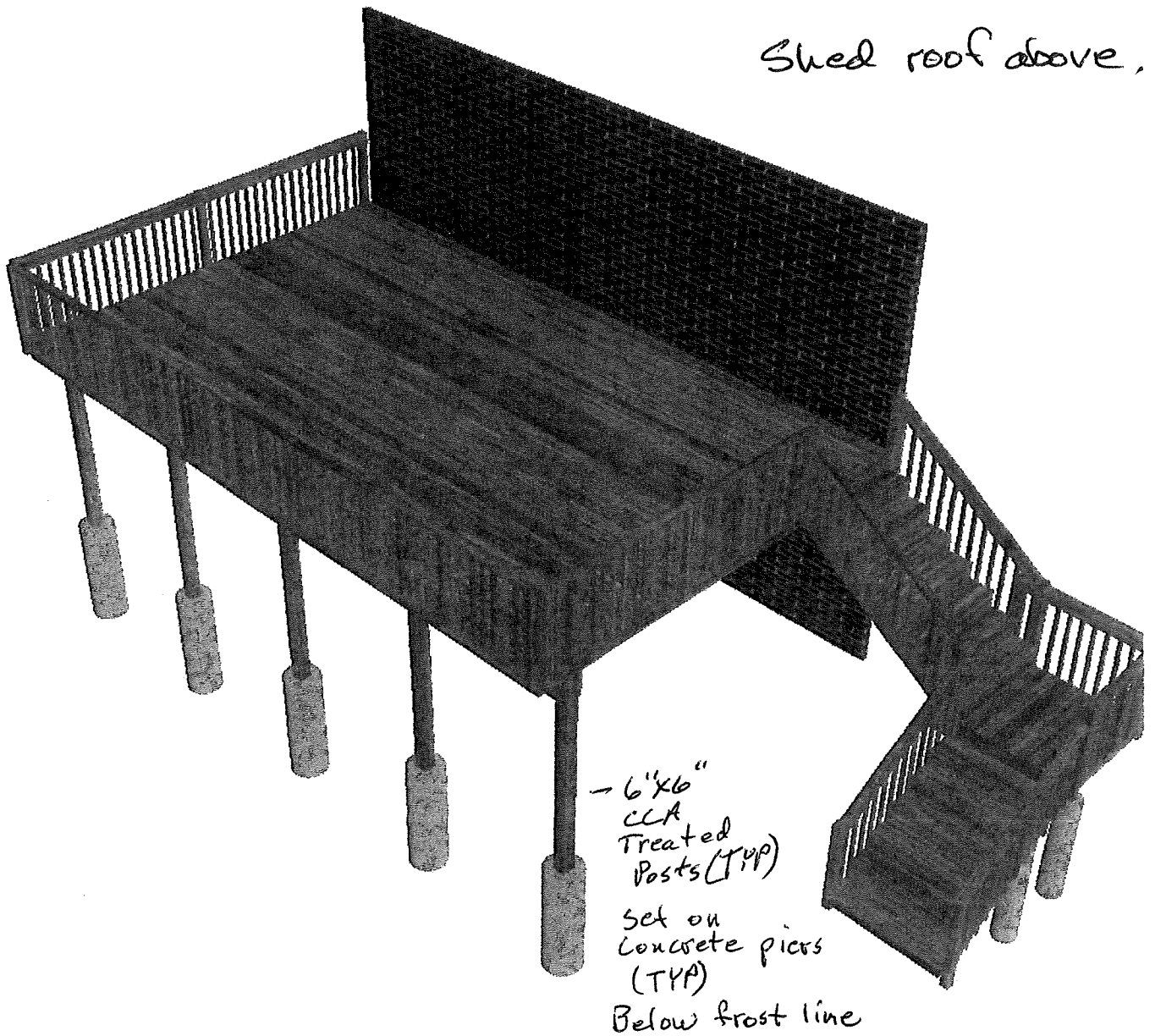
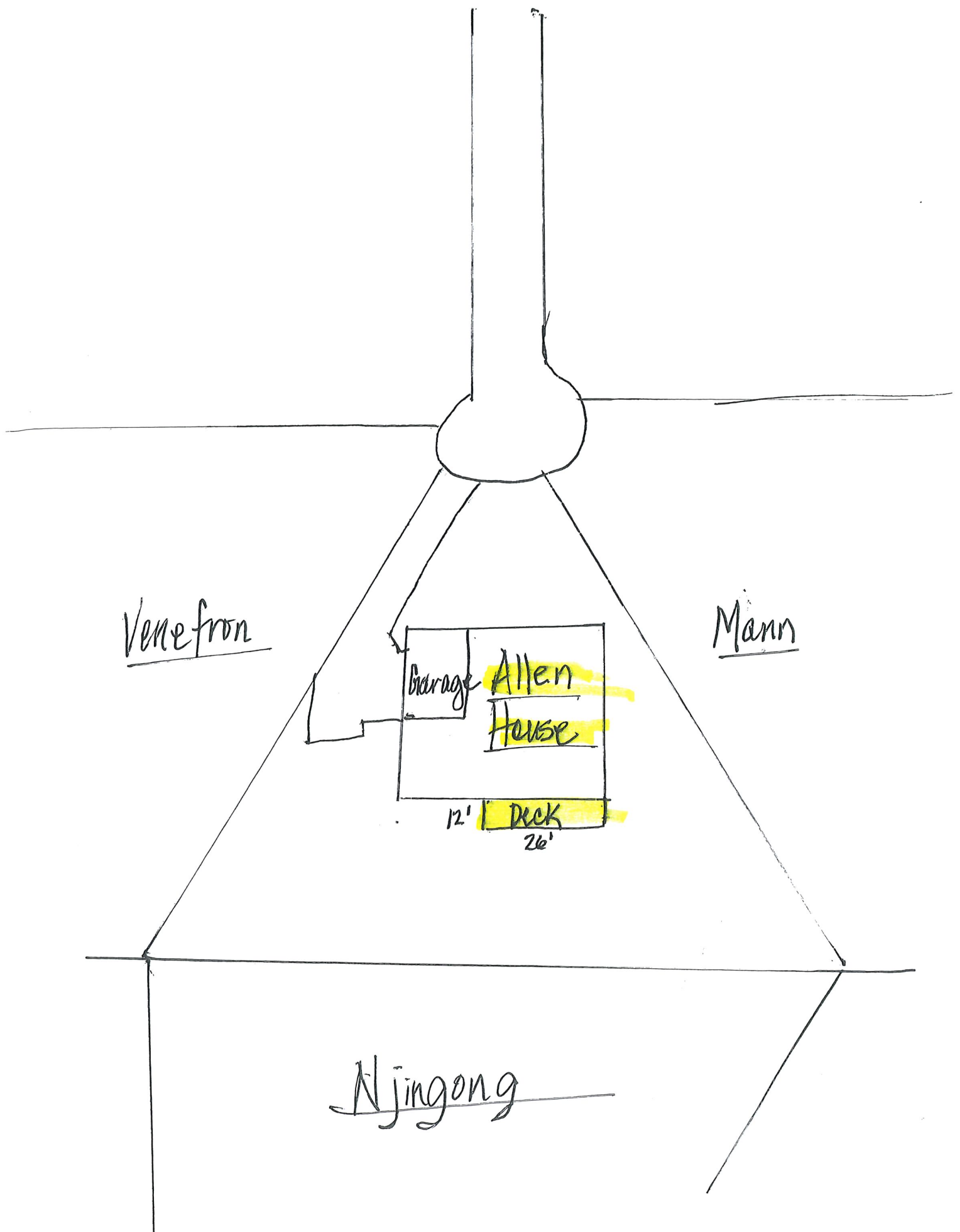




3D View



Warning and Important Instructions: This is not a final design plan or estimate. Edgenet, LLC. assumes no responsibility for the correct use or output of this program. All information contained on this page is subject to the terms in the disclaimer located at the end of this document.



Vene from

Mann

Garage

Allen
House

12'

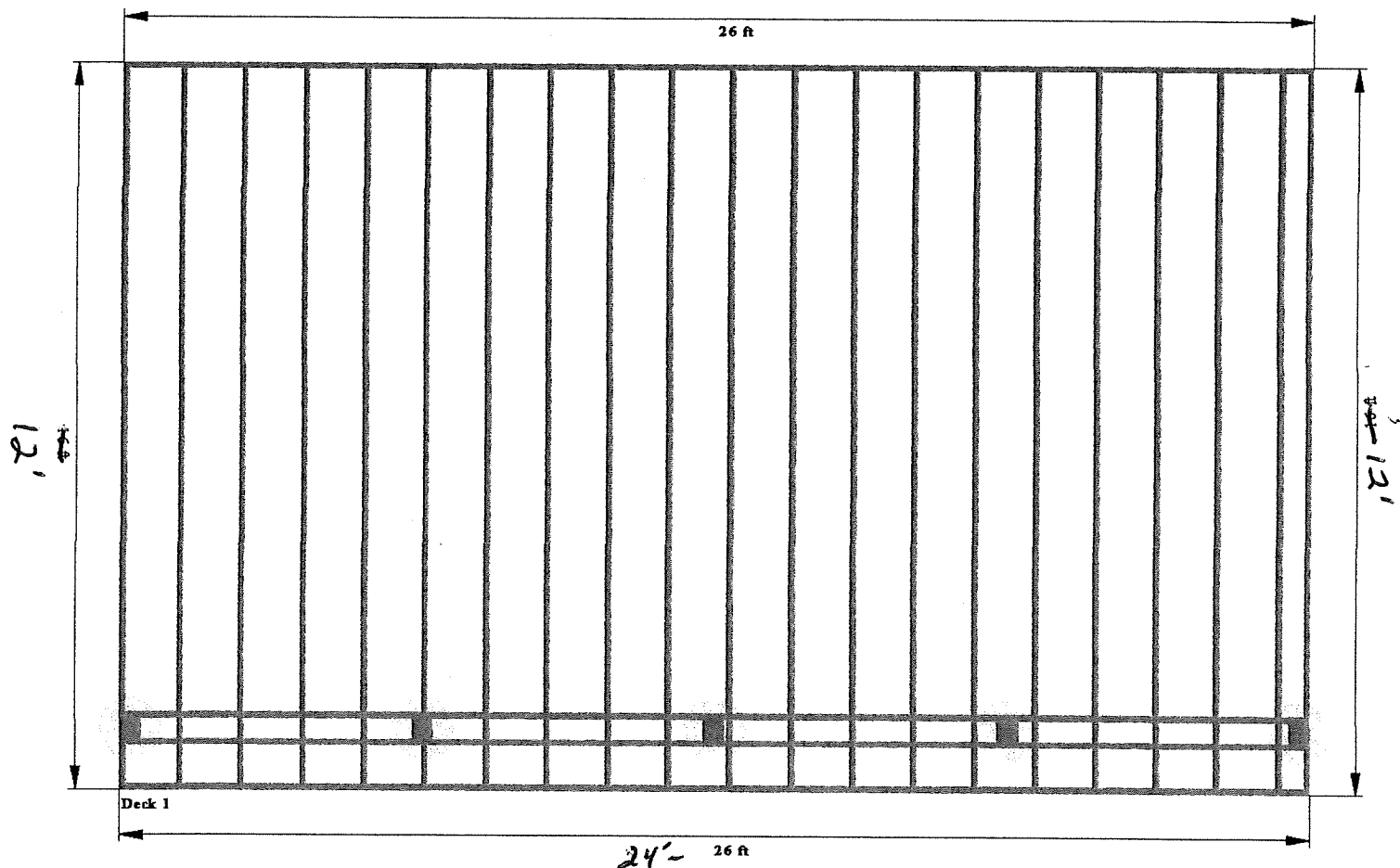
Deck

26'

Njingong



Dimension View - Deck 1

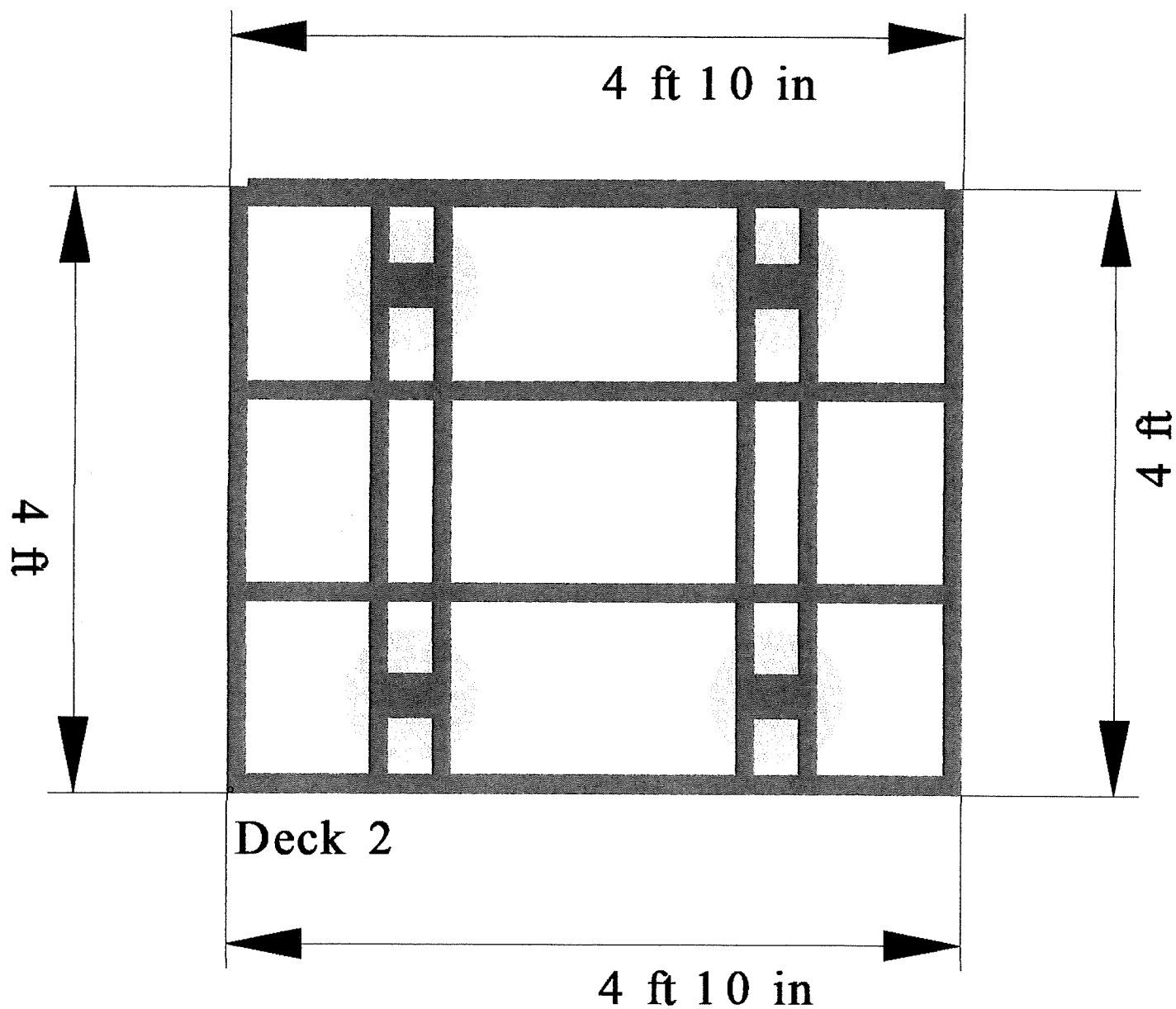


Warning and Important Instructions: This is not a final design plan or estimate. Edgenet, LLC. assumes no responsibility for the correct use or output of this program. All information contained on this page is subject to the terms in the disclaimer located at the end of this document.

Copyright © 1989-2019 Edgenet, LLC.



Dimension View - Deck 2



Transition deck for stairs

Warning and Important Instructions: This is not a final design plan or estimate. Edgenet, LLC. assumes no responsibility for the correct use or output of this program. All information contained on this page is subject to the terms in the disclaimer located at the end of this document.

Copyright © 1989-2019 Edgenet, LLC.

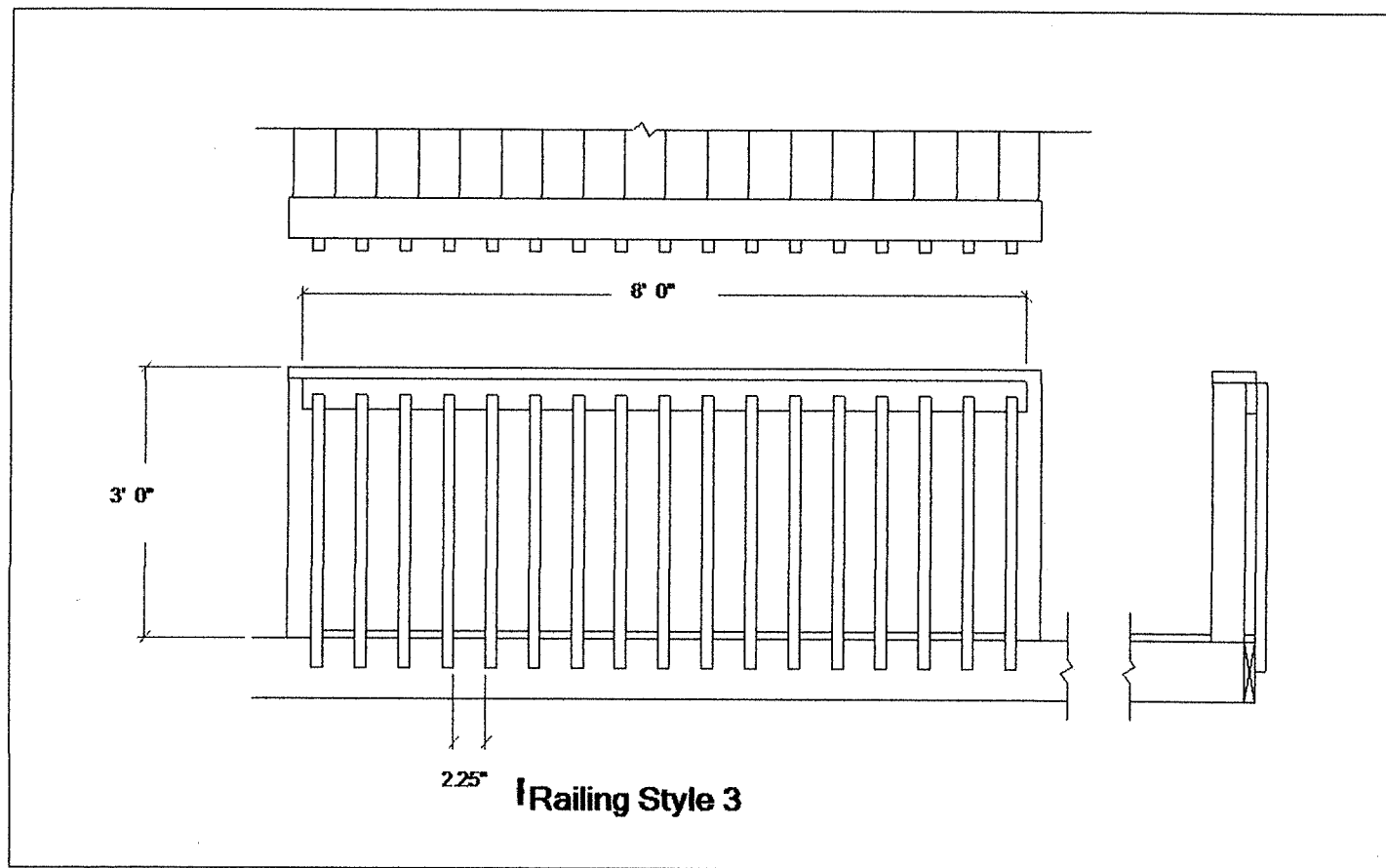


4A	2 in OC	1 R 2 in OC	1 R 2 in OC	1 R 2 in OC
4B	1 R 2 in OC	1 R 2 in OC	1 R 2 in OC	1 R 2 in OC
4C	1 R 2 in OC	1 R 2 in OC	1 R 2 in OC	1 R 2 in OC
4D	1 R 2 in OC	1 R 2 in OC	1 R 2 in OC	1 R 2 in OC
4E	1 R 2 in OC	1 R 2 in OC	1 R 2 in OC	1 R 2 in OC
4F	1 R 2 in OC	1 R 2 in OC	1 R 2 in OC	1 R 2 in OC
4G	1 R 2 in OC	1 R 2 in OC	1 R 2 in OC	1 R 2 in OC
4H	1 R 2 in OC	1 R 2 in OC	1 R 2 in OC	1 R 2 in OC
4I	1 R 2 in OC	1 R 2 in OC	1 R 2 in OC	1 R 2 in OC
4J	1 R 2 in OC	1 R 2 in OC	1 R 2 in OC	1 R 2 in OC
4K	1 R 2 in OC	1 R 2 in OC	1 R 2 in OC	1 R 2 in OC
4L	1 R 2 in OC	1 R 2 in OC	1 R 2 in OC	1 R 2 in OC
4M	1 R 2 in OC	1 R 2 in OC	1 R 2 in OC	1 R 2 in OC
4N	1 R 2 in OC	1 R 2 in OC	1 R 2 in OC	1 R 2 in OC
4O	1 R 2 in OC	1 R 2 in OC	1 R 2 in OC	1 R 2 in OC
4P	1 R 2 in OC	1 R 2 in OC	1 R 2 in OC	1 R 2 in OC
4Q	1 R 2 in OC	1 R 2 in OC	1 R 2 in OC	1 R 2 in OC
4R	1 R 2 in OC	1 R 2 in OC	1 R 2 in OC	1 R 2 in OC
4S	1 R 2 in OC	1 R 2 in OC	1 R 2 in OC	1 R 2 in OC
4T	1 R 2 in OC	1 R 2 in OC	1 R 2 in OC	1 R 2 in OC
4U	1 R 2 in OC	1 R 2 in OC	1 R 2 in OC	1 R 2 in OC
4V	1 R 2 in OC	1 R 2 in OC	1 R 2 in OC	1 R 2 in OC
4W	1 R 2 in OC	1 R 2 in OC	1 R 2 in OC	1 R 2 in OC
4X	1 R 2 in OC	1 R 2 in OC	1 R 2 in OC	1 R 2 in OC
4Y	1 R 2 in OC	1 R 2 in OC	1 R 2 in OC	1 R 2 in OC
4Z	1 R 2 in OC	1 R 2 in OC	1 R 2 in OC	1 R 2 in OC

Warning and Important Instructions: This is not a final design plan or estimate. Edgenet, LLC. assumes no responsibility for the correct use or output of this program. All information contained on this page is subject to the terms in the disclaimer located at the end of this document.



Railing Details View



Warning and Important Instructions: This is not a final design plan or estimate. Edgenet, LLC. assumes no responsibility for the correct use or output of this program. All information contained on this page is subject to the terms in the disclaimer located at the end of this document.

Copyright © 1989-2019 Edgenet, LLC.



Deck Information

Deck 1

Construction Method - Beam to Side of Post
Footing Type - Pier In-Ground
Live Load - 60
Dead Load - 10
Decking Spacing - 1/8 in
Joist Spacing - 16 in
Beam Spacing - 168 in
Post Spacing - 76 5/8 in
Decking - L5/4x6 Treated Premium Southern Pine No. 2
Beams - L2x12 Treated Southern Pine No. 1
Joists - L2x10 Treated Southern Pine No. 1
Posts - L6x6 Treated Southern Pine No. 2
Deck Height - 108 in
Diagonal Bracing - Yes
Joist Overhang - 12 in
Beam Overhang - 0 in
Decking Deflection Factor - 360
Joist Deflection Factor - 360
Beam Deflection Factor - 360
Pref Decking Size - 5/4x6
Pref Joist Size - 2x10
Pref Beam Size - 2x12
Pref Post Size - 6x6
Diag Brace Height 1 - 24 in
Diag Brace Height 2 - 24 in

Deck 2

Construction Method - Beam to Side of Post
Footing Type - Pier In-Ground
Live Load - 60
Dead Load - 10
Decking Spacing - 1/8 in
Joist Spacing - 16 in
Beam Spacing - 34 in
Post Spacing - 48 3/32 in
Decking - L5/4x6 Treated Premium Southern Pine No. 2
Beams - L2x12 Treated Southern Pine No. 1
Joists - L2x10 Treated Southern Pine No. 1
Posts - L4x4 Treated Southern Pine No. 2
Deck Height - 48 in
Diagonal Bracing - No
Joist Overhang - 12 in
Beam Overhang - 6 in
Decking Deflection Factor - 360
Joist Deflection Factor - 360
Beam Deflection Factor - 360
Pref Decking Size - 5/4x6
Pref Joist Size - 2x10

Warning and Important Instructions: This is not a final design plan or estimate. Edgenet, LLC. assumes no responsibility for the correct use or output of this program. All information contained on this page is subject to the terms in the disclaimer located at the end of this document.